

Ultron

AiO Windows Tablet



10.1"

15.6"

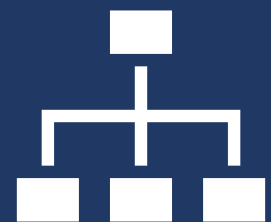
21.5"



Commercial Grade



All-in-One



Highly-expandible

Product overview

Ultron windows tablet Series is designed to be placed individually as a All-in-One kiosk. There are VESA mounting holes at the back of the tablet for easy installation.

Available in 10.1", 15.6", 21.5" widescreen

The most common operating system

Easy deployments with various VESA mounting

Ultron All-in-One Windows Tablet

10.1" / 15.6" / 21.5"

| | | J1900 | | | 3865U (Kaby Lake) | | | i3-7100U (Kaby Lake) | | | i5-7200U (Kaby Lake) | | |
|----------------|------------------------|---|----------------------|-----------------------|-------------------------------------|----------------------|-----------------------|-------------------------------------|----------------------|-----------------------|---|----------------------|-----------------------|
| Screen size | | 10.1" | 15.6" | 21.5" | 10.1" | 15.6" | 21.5" | 10.1" | 15.6" | 21.5" | 10.1" | 15.6" | 21.5" |
| Panel info. | Resolution | 1280 x 800 | 1920 x 1080 | 1920 x 1080 | 1280 x 800 | 1920 x 1080 | 1920 x 1080 | 1280 x 800 | 1920 x 1080 | 1920 x 1080 | 1280 x 800 | 1920 x 1080 | 1920 x 1080 |
| | Brightness | 350 cd/m2 | 220 cd/m2 | 220 cd/m2 | 350 cd/m2 | 220 cd/m2 | 220 cd/m2 | 350 cd/m2 | 220 cd/m2 | 220 cd/m2 | 350 cd/m2 | 220 cd/m2 | 220 cd/m2 |
| | Contrast ratio | 800:1 | 800:1 | 1000:1 | 800:1 | 800:1 | 1000:1 | 800:1 | 800:1 | 1000:1 | 800:1 | 800:1 | 1000:1 |
| | Aspect Ratio | 16:10 | 16:9 | 16:9 | 16:10 | 16:9 | 16:9 | 16:10 | 16:9 | 16:9 | 16:10 | 16:9 | 16:9 |
| | Active Display Area | 134.8 x 216.2 mm | 344.16 x 193.59mm | 476.06 x 267.786mm | 134.8 x 216.2 mm | 344.16 x 193.59mm | 476.06 x 267.786mm | 134.8 x 216.2 mm | 344.16 x 193.59mm | 476.06 x 267.786mm | 134.8 x 216.2 mm | 344.16 x 193.59mm | 476.06 x 267.786mm |
| | Viewing angle | H:170°/ V:170° | H: 178°/ V:178° | H:170°/ V:170° | H:170°/ V:170° | H: 178°/ V:178° | H:170°/ V:170° | H:170°/ V:170° | H: 178°/ V:178° | H:170°/ V:170° | H:170°/ V:170° | H: 178°/ V:178° | H:170°/ V:170° |
| | Touch Tech. | 10 point cap touch (6H semi-tempered glass) | | | | | | | | | | | |
| CPU & System | CPU | Intel Celeron J1900 (Quad Core) | | | 3865U (2 cores) | | | Intel Core i3 7100U (2 cores) | | | Intel Core i5 7200U | | |
| | Base Frequency | 2.0 GHz | | | 1.80 GHz | | | 2.40GHz | | | 2.5 GHz | | |
| | CPU Turbo Boost | 2.42 GHz | | | / | | | / | | | 3.1 GHz | | |
| | CPU Cache | 2MB | | | 2 MB SmartCache | | | 3 MB SmartCache | | | 3MB | | |
| | BIOS | AMI 8MB UEFI BIOS | | | | | | | | | | | |
| RAM | RAM | 4GB DDR3L @1333 MHz (upgradable) | | | Dual Channel 2 x DDR4 2133 MHz | | | Dual Channel 2 x DDR4 2133 MHz | | | 4GB DDR4 2133 MHz (upgradable) | | |
| ROM | Storage | 64GB SSD (upgradable) | | | 128GB | | | 128GB | | | 128GB SSD (upgradable) | | |
| Software | OS | Pre-installed Windows 10 IoT core (License is optional) | | | Win 10 64bit, Linux 32 / 64 bit | | | Win 10 64bit, Linux 32 / 64 bit | | | Pre-installed Windows 10 IoT core (License is optional) | | |
| GPU | GPU chipset | Intel HD Graphic (Bay Trail, 688 - 854 MHz) | | | Intel HD Graphis 610 | | | Intel HD Graphics 620 | | | Intel HD Graphic620 | | |
| | VGA | Yes | | | No | | | No | | | No | | |
| | Display Port | No | | | Yes | | | Yes | | | Yes | | |
| | HDMI | Yes | | | | | | | | | | | |
| | # of display supported | 2 | | | HDMI+DP+eDP/LVDS (3 Display) | | | HDMI+DP+eDP/LVDS (3 Display) | | | 3 | | |
| Audio | Codec | Realtek HD ALC662 | | | | | | | | | | | |
| | I/O | Line-out x 1, Mic-in x 1 | | | Line-out x 1, Mic-in x 1 | | | Line-out x 1, Mic-in x 1 | | | Line-out & Mic-in Combo x 1 | | |
| | Speaker | 5W x 2 | | | | | | | | | | | |
| Ethernet | Controller | Realtek RTL8111F Gigabit LAN | | | Intel i211 - 10/100/1000Mbps | | | Intel i211 - 10/100/1000Mbps | | | Intel i211 - 10/100/1000Mbps | | |
| | Connector | 2 x RJ45 | | | | | | | | | | | |
| | Wake on LAN | Yes | | | | | | | | | | | |
| Storage | Slot | 1 x mSATA/ SATA 2.0; 1 x SATA2.0 | | | SATA 3.0 x 2 (Celeron for 1 only) | | | SATA 3.0 x 2 (Celeron for 1 only) | | | 1 x M.2; 2 x SATA3.0 | | |
| Housing | Material & color | Metal housing with Matte black paint | | | | | | | | | | | |
| I/O | USB 2.0 | 2 | | | 0 | | | 0 | | | 0 | | |
| | USB 3.0 | 1 | | | 4 | | | 4 | | | 4 | | |
| | Audio | Line-out x 1; Mic-in x 1 | | | Line-out x 1; Mic-in x 1 | | | Line-out x 1; Mic-in x 1 | | | Line-out & Mic-in Combo x 1 | | |
| | LAN | 2 | | | 2 | | | 2 | | | 2 | | |
| | HDMI | 1 (HDMI1.4) | | | | | | | | | | | |
| | Display port | 0 | | | 1 | | | 1 | | | 1 | | |
| | VGA | 1 | | | 0 | | | 0 | | | 0 | | |
| Upgradable I/O | USB2.0 | 4 | | | 4 | | | 4 | | | 4 | | |
| | RS232 | 6 (COM2 able to change to RS485) (Only COM2 & 4 with power supply) | | | 5 (Only COM2 & 4 with power supply) | | | 5 (Only COM2 & 4 with power supply) | | | 4 (with power supply) | | |
| | RS485 | 1 (switch from COM2) | | | 1 | | | 1 | | | 2 | | |
| | PS/2 | 1 (Keyboard or Mouse) | | | 1 (Keyboard or Mouse) | | | 1 (Keyboard or Mouse) | | | No | | |
| | GPIO | 8 | | | 8 | | | 8 | | | 8 | | |

| | | | | | |
|------------------|-----------------------|---|--|--|---|
| | LPT | 1 | 1 | 1 | 0 |
| AV capability | Camera | Front Facing Camera 2/5 MP fixed focus (Optional) | | | |
| Hardware monitor | Sensor | CPU temperature sensor; Voltage sensor; Watchdog; Plug and Start | | | |
| | Included in Box | Ultron open frame tablet, Power Adaptor, Power cable | | | |
| | Consumption | TBC | | | |
| | Power input | 12V 5A | 1 x 12V DC - IN/4 PIN Power | 1 x 12V DC - IN/4 PIN Power | 12V 5A |
| | Operating Environment | Operating: 32°F to 104°F (0°C to 40°C); Storage: -4°F to 122°F (-20°C to 50°C) Operating: 20%-80%; Storage: 10%-95% | Operating: -40°C ~ 60°C; Storage: -40°C ~ 80°C | Operating: -40°C ~ 60°C; Storage: -40°C ~ 80°C | Operating: 32°F to 104°F (0°C to 40°C); Storage: -4°F to 122°F (-20°C to 50°C) Operating: 20%-80%; Storage: 10%-95% |
| | Certification | CE, FCC, ROHS | | | |
| | Language | Multi language | | | |
| | VESA | VESA 75 for 10 inch, VESA 100 for 15.6 and 21.5 inch | | | |

Options information

| Option | Type | Remarks |
|-----------------------------|-----------------------|---|
| 3G/4G module | Mini-PCI-e add-on | WCDMA / HSDPA 2100 / 1900 / 850 (900) MHz GSM / GPRS / EDGE 850 / 900 / 1800 / 1900 MHz |
| Windows 10 IoT core license | / | / |
| RAM | Extra RAM | 4/ 8GB |
| SSD | Mini-PCI-e add-on | 64/ 128 GB |
| Front Camera | Extra PCB | 2 Megapixel with Fixed Focus / 5Megapixel with Auto Focus |
| Barcode module | USB accessories | 1D barcode/ 2D barcode |
| RFID / NFC module | USB accessories | ISO 14443 T=CL, T=CL, 1K/4K, ISO 18092 |
| Printer | RS232/USB accessories | Receipt thermal printer |

To find out more about our extensive range of Glorystar solutions, go to www.glorystargroup.com, or call the office nearest you. For more information, please contact us at sales@glorystargroup.com. Glorystar reserves the right to change or update, without notice, any information contained herein; to change, without notice, the design, construction, materials, processing or specifications of any products; and to discontinue or limit production or distribution of any products. Glorystar, the Glorystar logo, STAR CONTROL and STAROS are either trademarks or registered trademarks of Glorystar Group Limited. All other trademarks are the property of their respective owners.